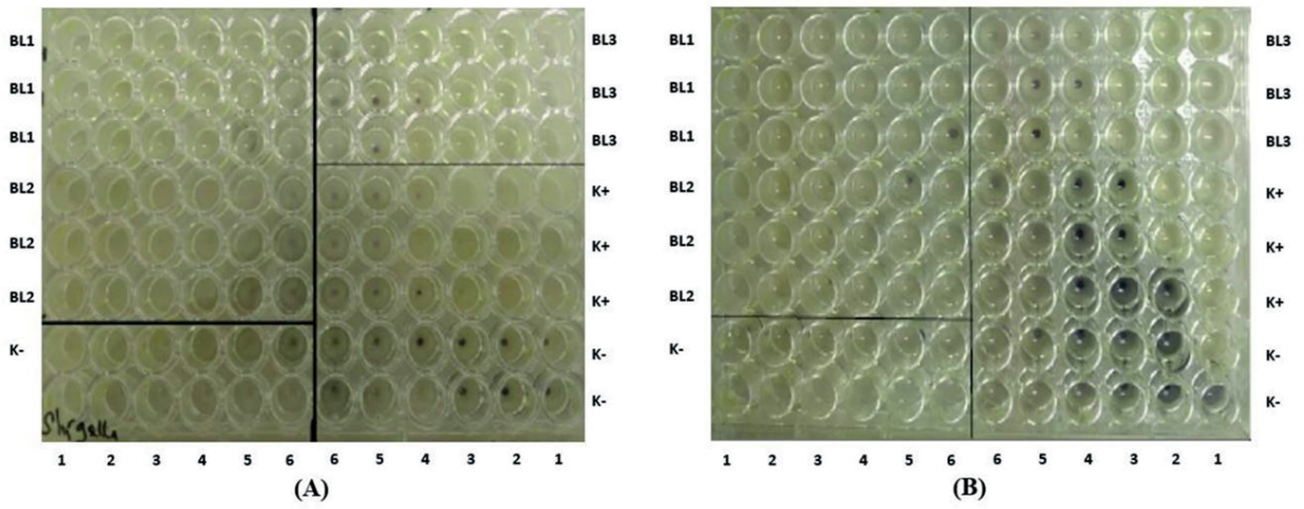
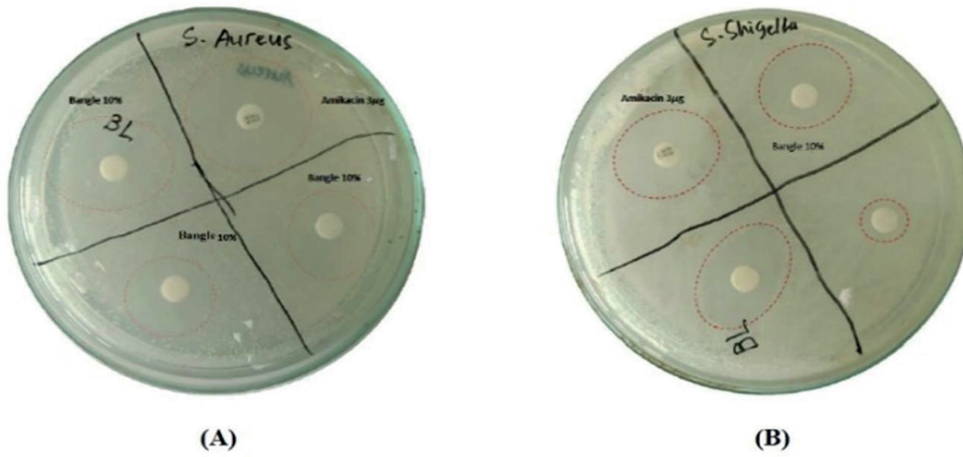


Supplementary 1.



MIC of two bacteria against 10% of *Z. purpureum*. A: *S. sonnei* (2.50 ± 0.0 vol%); B: *S. aureus* (1.25 ± 0.0 vol%).

Supplementary 2.



Inhibitory zone against 10% of *Z. purpureum*. A: *S. aureus* (12.7 ± 0.7 mm); B: *S. sonnei* (10.0 ± 0.0 mm).