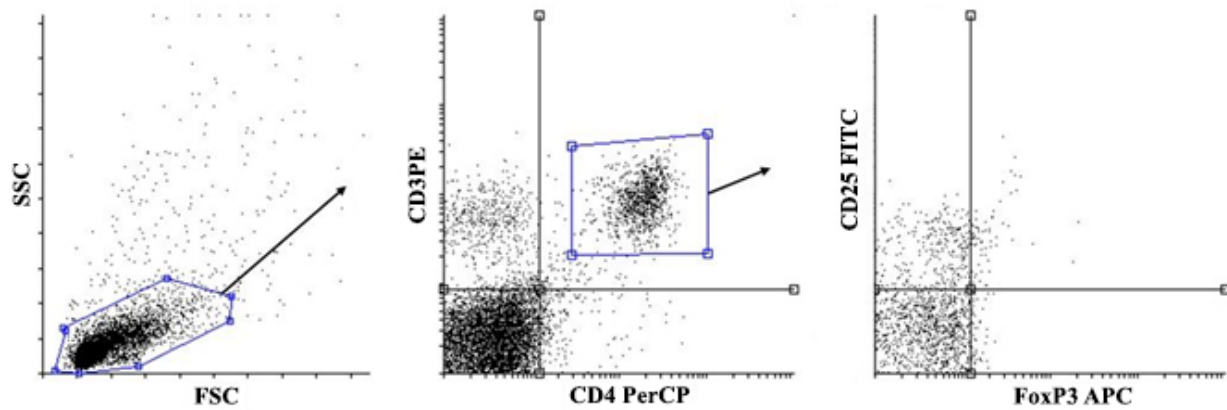


**Supplementary 1.**

**CD4<sup>+</sup> Tregs gating strategy.** A gate of total splenocyte was set (left), followed by a CD3<sup>+</sup> and CD4<sup>+</sup> double positive populations (middle). Further gating (right) with CD25<sup>+</sup> and FoxP3<sup>+</sup> double positive subpopulations (upper right quadrant) from the previous subpopulations was determined as CD4<sup>+</sup> Tregs.